

CLIFF

CLIFFCON[®] 68


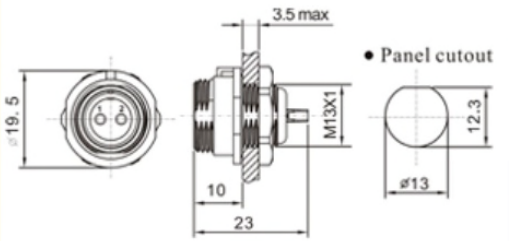
CLIFFCON68 IS AN IP68 RATED MULTIPIN CONNECTOR FOR WATERPROOF AND RUGGED APPLICATIONS.


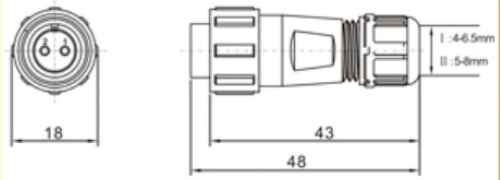
FEATURES

- Panel hole cut-out size: 13mm
- IP68 for under water, outdoor and indoor when mated or with optional cap fitted
- CE & ROHS approval
- 2 to 9 gold-plated contacts (no 8 pin version)
- Sealing cap available for socket. Sold separately.

SPECIFICATION

Coupling Type	Threaded coupling
IP Rating	IP68
Material	Plastic Shell Nylon66, fire resistance:V-0
Insert material	PPS max temperature 260°C, fire resistance:V-0
Contact material	Brass with gold plating
Termination	Solder
Cable OD	5-8mm
Mating cycle	> 500
Temperature range	-25~+85°C
Insulation resistance	2000MΩ

Picture	Description	Drawing
	Front Mount Male	

Picture	Description	Drawing
	Cable Connector Female	

Cliff Electronic Components, Ltd.
76 Holmethorpe Avenue, Holmethorpe Ind. Est.
Redhill, Surrey RH1 2PF. England
Tel: +44 (0) 1737 771375
Fax: +44 (0) 1737 766012
Email: sales@cliffuk.co.uk



Visit us online at:

www.cliffuk.co.uk

Contact arrangement and spec for solder termination.

Number of Contacts	2	3	4	5	6	7	9
Male contact face view							
Rated current (A)	13A	13A	5A	5A	5A	5A	3A
Contact diameter	Ø1.6 x 2	Ø1.6 x 3	Ø1 x 4	Ø1 x 5	Ø1 x 6	Ø1 x 7	Ø0.7 x 9
Rated voltage (AC, V)	250V	250V	200V	180V	125V	125V	125V
Test voltage (AC, V) 1 min	1500V	1500V	1500V	1000V	1000V	1000V	1000V
Contact resistance mΩ	2	2	5	5	5	5	10
Wire size mm ² / AWG	≤2 / 14	≤2 / 14	≤0.785 / 18	≤0.785 / 18	≤0.785 / 18	≤0.785 / 18	≤0.785 / 18

PART No.	DESCRIPTION	No PINS	CABLE OD
FM686802	CLIFFCON68 MALE PANEL SOCKET 2 PIN	2	N/A
FM686803	CLIFFCON68 MALE PANEL SOCKET 3 PIN	3	N/A
FM686804	CLIFFCON68 MALE PANEL SOCKET 4 PIN	4	N/A
FM686805	CLIFFCON68 MALE PANEL SOCKET 5 PIN	5	N/A
FM686806	CLIFFCON68 MALE PANEL SOCKET 6 PIN	6	N/A
FM686807	CLIFFCON68 MALE PANEL SOCKET 7 PIN	7	N/A
FM686809	CLIFFCON68 MALE PANEL SOCKET 9 PIN	9	N/A

PART No.	DESCRIPTION	No PINS	CABLE OD
FM686832	CLIFFCON68 FEMALE PANEL SOCKET 2 PIN	2	N/A
FM686822	CLIFFCON68 MALE OVERMOULD 2 PIN 5M	2	4.5mm

PART No.	DESCRIPTION	No PINS	CABLE OD
FM686812	CLIFFCON68 FEMALE PLUG 2 PIN	2	5-8mm
FM686813	CLIFFCON68 FEMALE PLUG 3 PIN	3	5-8mm
FM686814	CLIFFCON68 FEMALE PLUG 4 PIN	4	5-8mm
FM686815	CLIFFCON68 FEMALE PLUG 5 PIN	5	5-8mm
FM686816	CLIFFCON68 FEMALE PLUG 6 PIN	6	5-8mm
FM686817	CLIFFCON68 FEMALE PLUG 7 PIN	7	5-8mm
FM686819	CLIFFCON68 FEMALE PLUG 9 PIN	9	5-8mm

PART No.	DESCRIPTION	No PINS	CABLE OD
FM686800	CLIFFCON68 SOCKET CAP	N/A	N/A

PART No.	DESCRIPTION	No PINS	CABLE OD
FM686842	CLIFFCON68 MALE INLINE PLUG	2	5-8mm
FM686843	CLIFFCON68 MALE INLINE PLUG	3	5-8mm



Socket with cap fitted.



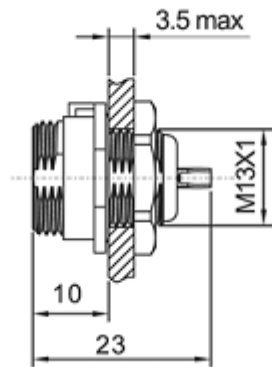
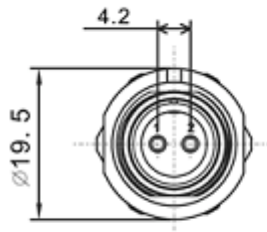
Male Inline Plug
2 Pin and 3 Pin currently available.
Other models on request.

2 Pin Female Panel Socket

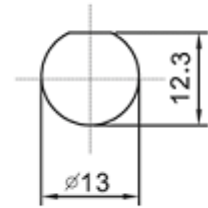
NEW



Part No: **FM686832**



Panel cutout

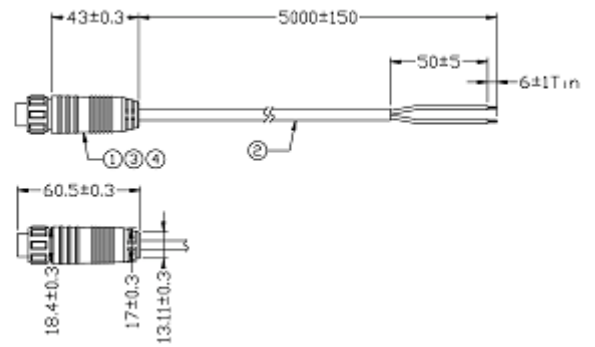
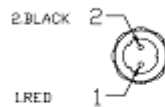


2 Pin Male Overmould Plug with 5m Cable

NEW



Part No: **FM686822**



Cable Spec
Unshielded UL2464 #20*2C
(26/0.16BC*1.46*2C) O/D Ø4.5mm