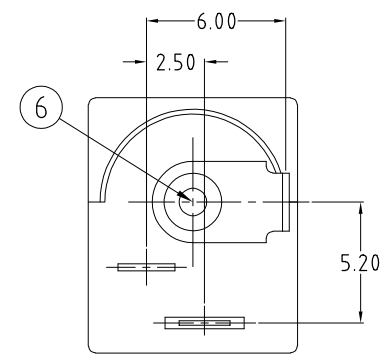
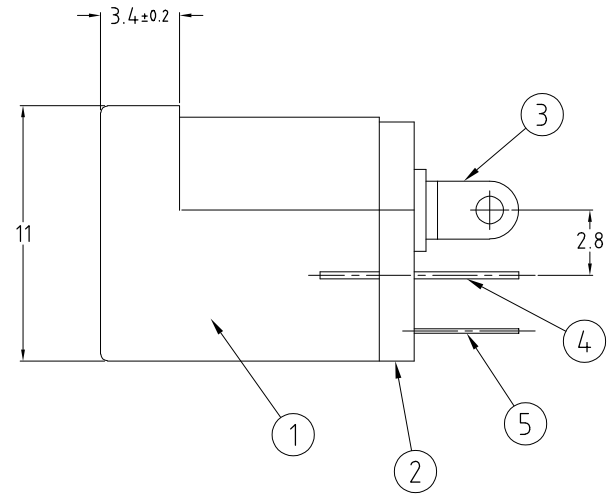
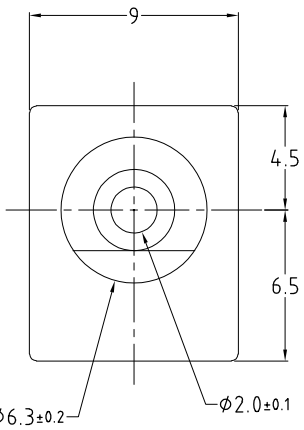
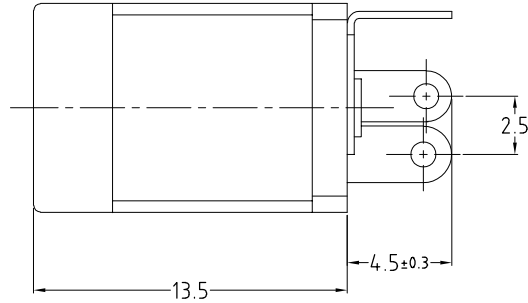
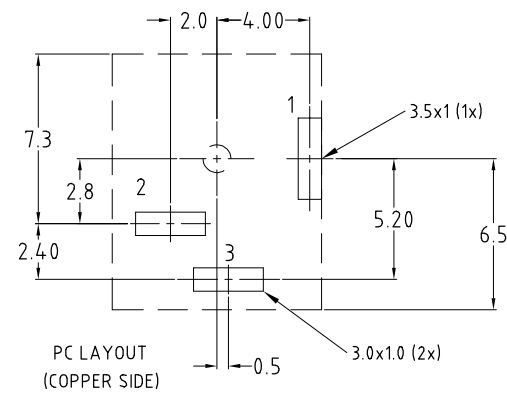
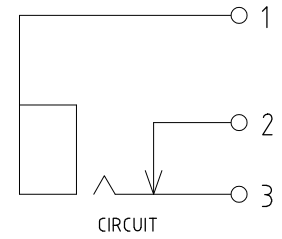


No.	DESCRIPTION	QTY	MATERIAL	FINISH
1	HOUSING	1	PBT 4815 UL 94V0	BLACK
2	REAR COVER	1	PF	-
3	CENTRE CONTACT	1	C2680 t=0.3	Sn PLATED
4	BREAK CONTACT	1	C2680 t=0.3	Sn PLATED
5	SPRING CONTACT	1	SUS301 t=0.2	Sn PLATED
6	CENTRE PIN	1	BRASS	Cu/Sn PLATED

ISS.	AMEND	DATE
1	REDRAWN	05/06/90
2	MATL PBT	14/02/91
3	UPDATED	17/06/03
4	DIM 9 ADDED	26/04/17
5	UPDATE REMOVE DC9A	06/12/21



**SPECIFICATIONS**  
 RATING : 24V DC 3A  
 INSULATION RESISTANCE : >100MΩ @500VDC  
 CONTACT RESISTANCE : >30mΩ  
 WITHSTAND VOLTAGE : 500V AC FOR 1 MINUTE  
 INSERTION FORCE : 0.3kg-3kg  
 EXTRACTION FORCE : 0.3kg-3kg  
 MINIMUM OPERATIONS : 5000+  
 OPERATING TEMPERATURE : -25°C to +70°C



**RoHS COMPLIANT**

**TOLERANCE**  
 NO DEC. PLACE ± 0.50  
 1 DEC. PLACE ± 0.30  
 2 DEC. PLACE ± 0.10  
 HOLE Ø ± 0.10  
 ANGLES ± 2°  
 UNLESS OTHERWISE STATED

**Cliff Electronic Components Ltd.**  
 76 Holmehorpe Avenue, Holmehorpe Industrial Estate,  
 Redhill, Surrey, RH1 2PF, England, UK  
 Tel: 01737-771375 Fax: 01737-766012 Website: www.cliffuk.co.uk

THE CONTENTS OF THIS DOCUMENT MUST NOT BE COPIED OR DISCLOSED TO A 3rd PARTY WITHOUT WRITTEN PERMISSION OF CLIFF UK. © 1990

DIMENSIONS IN MILLIMETERS UNLESS OTHERWISE STATED. WORK TO DIMENSIONS. REMOVE ALL BURRS. IF IN DOUBT ASK.

MATERIAL: SEE TABLE  
 FINISH: SEE TABLE  
 DRAWN: CAMJ

3rd ANGLE PROJECTION:

TITLE: DC POWER SOCKET DC9 - Ø2.1

DRWG. No. **FC68146** FORM: A4DRWGH

APPROVED: RWT

DO NOT SCALE