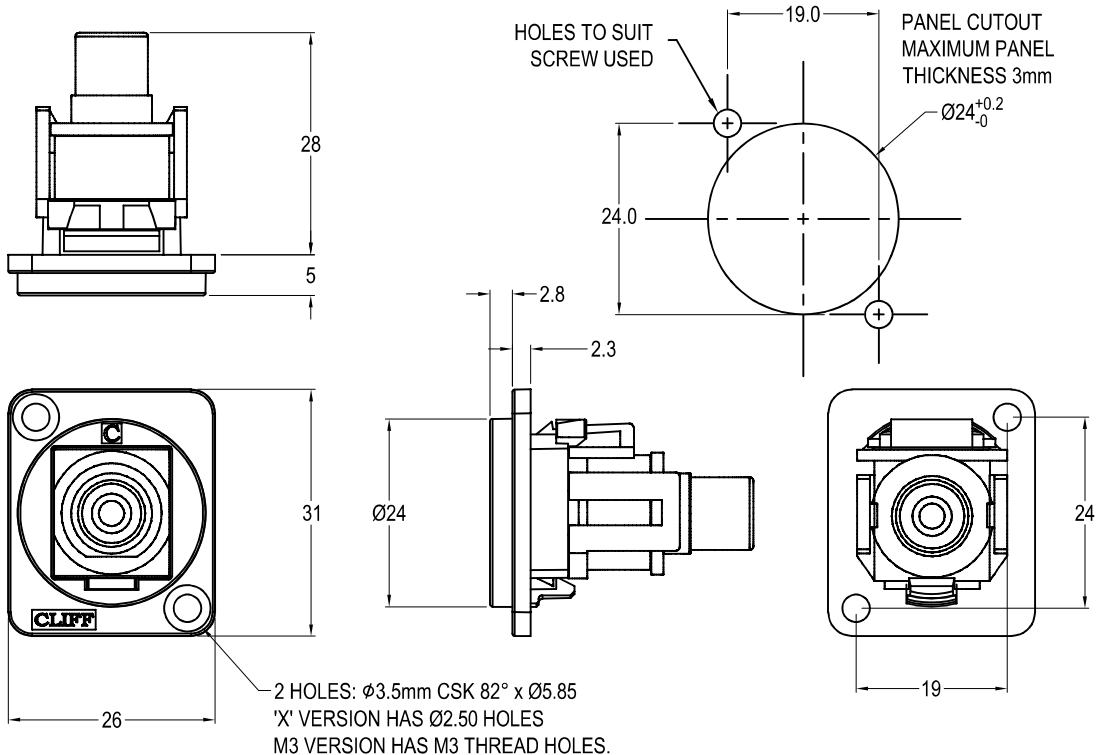


CLIFF

RCA PHONO FEEDTHROUGH CONNECTOR



Feedthrough Features

- Fits standard XLR $\text{Ø}24\text{mm}$ cutout.
- No soldering or punch termination. Use standard cable for each connector style.
- Front or rear mounted.
- Low rear profile

General:

Please note: Functionality is affected by cable quality, length and cable wiring configuration.

Material:

1. Contacts: gold plating over nickel
2. Plastic Frame: Polyamide UL94 V-2
3. Metal Frame: Diecast, Black or Nickel plated

Other models available:

Part No.

CP30231	White RCA Phono Black plastic frame, CSK holes
CP30231M	White RCA Phono Nickel plated metal frame, CSK holes
CP30231M3	White RCA Phono Nickel plated metal frame, M3 holes
CP30231MB	White RCA Phono Black metal frame, CSK holes
CP30231M3B	White RCA Phono Black metal frame, M3 holes
CP30231X	White RCA Phono Black plastic frame, PLAIN holes