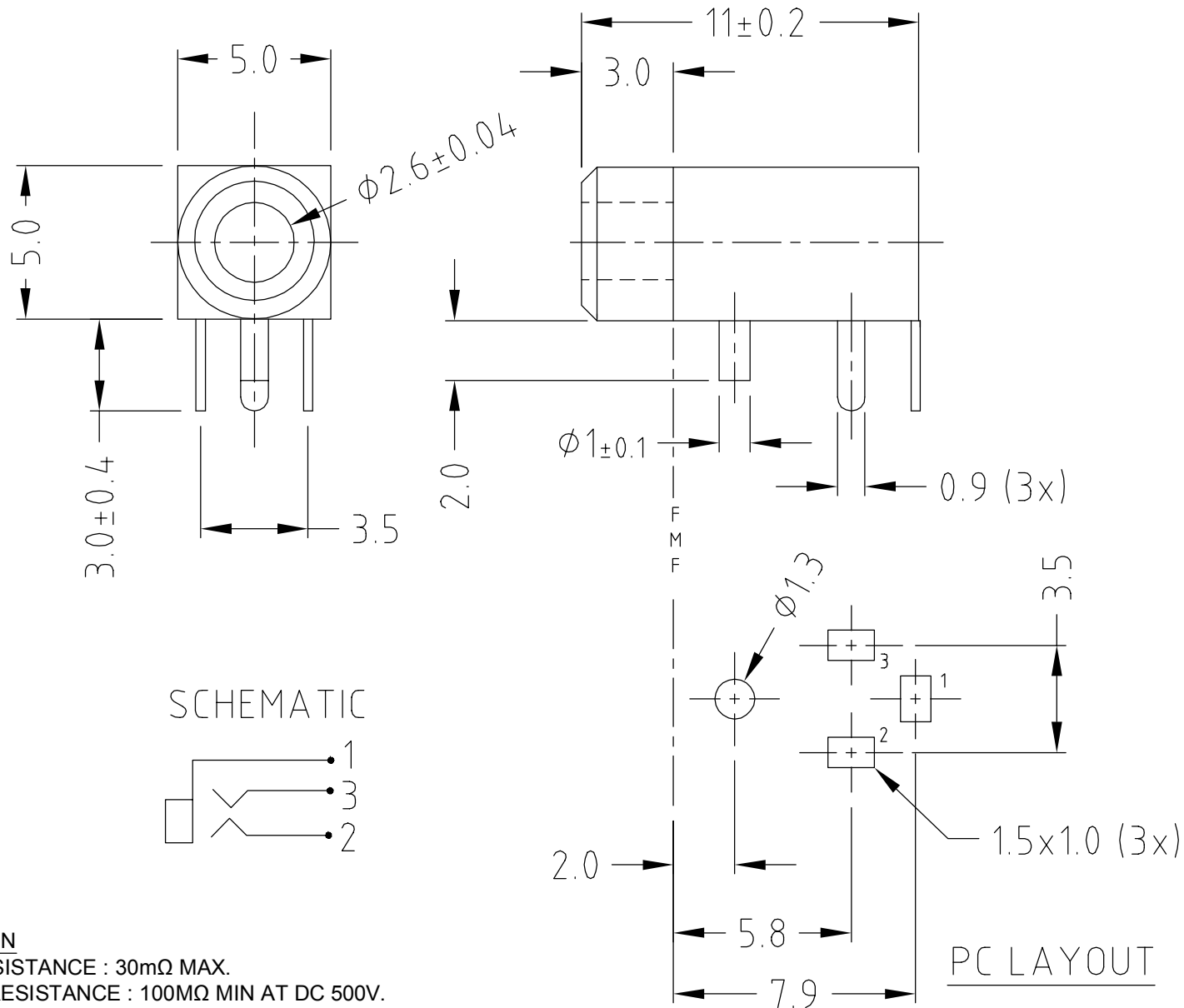
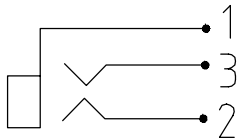


ISS.	AMEND	DATE
1	1st DRAWN	23/03/90
2	LAYOUT AMENDED	02/02/95
3	UPDATED	31/03/09
4	MAT. WAS ABS/BRASS	25/06/15



**SCHEMATIC**



**SPECIFICATION**

CONTACT RESISTANCE : 30mΩ MAX.  
 INSULATION RESISTANCE : 100MΩ MIN AT DC 500V.  
 DIELECTRIC WITHSTAND VOLTAGE : AC 500V FOR 1 MINUTE.

<b>RoHS</b> COMPLIANT
<b>TOLERANCE</b>
NO DEC. PLACE ±
1 DEC. PLACE ± 0.20
2 DEC. PLACE ±
HOLE Ø ±
ANGLES ±
UNLESS OTHERWISE STATED

<b>Cliff Electronic Components Ltd.</b> 76 Holmethorpe Avenue, Holmethorpe Industrial Estate, Redhill, Surrey, RH1 2PF, England, UK Tel: 01737-771375 Fax: 01737-766012 Website: www.cliffuk.co.uk	DIMENSIONS IN MILLIMETERS UNLESS OTHERWISE STATED. WORK TO DIMENSIONS. REMOVE ALL BURRS. IF IN DOUBT ASK.		3rd ANGLE PROJECTION:	DO NOT SCALE
	MATERIAL: POM / PHOSPHOR BRONZE FINISH: AS MOULDED (BLACK) / SILVER PLATED	TITLE: 2.5mm PC JACK SOCKET JY029		
THE CONTENTS OF THIS DOCUMENT MUST NOT BE COPIED OR DISCLOSED TO A 3rd PARTY WITHOUT WRITTEN PERMISSION OF CLIFF UK. © 1990	DRAWN: C.A.M.J.	APPROVED: R.W.T.	DRWG. No. <b>FC68102</b>	FORM: A4DRWGH