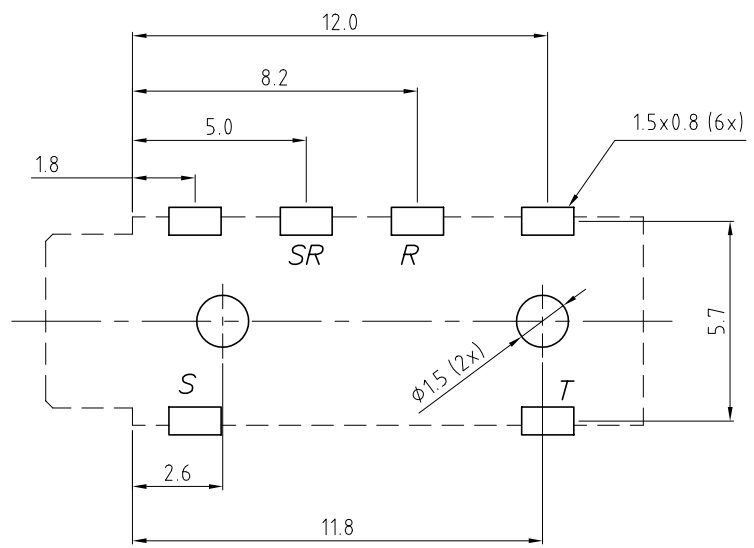
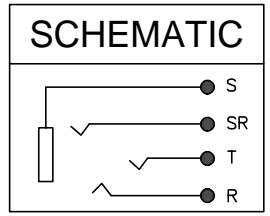
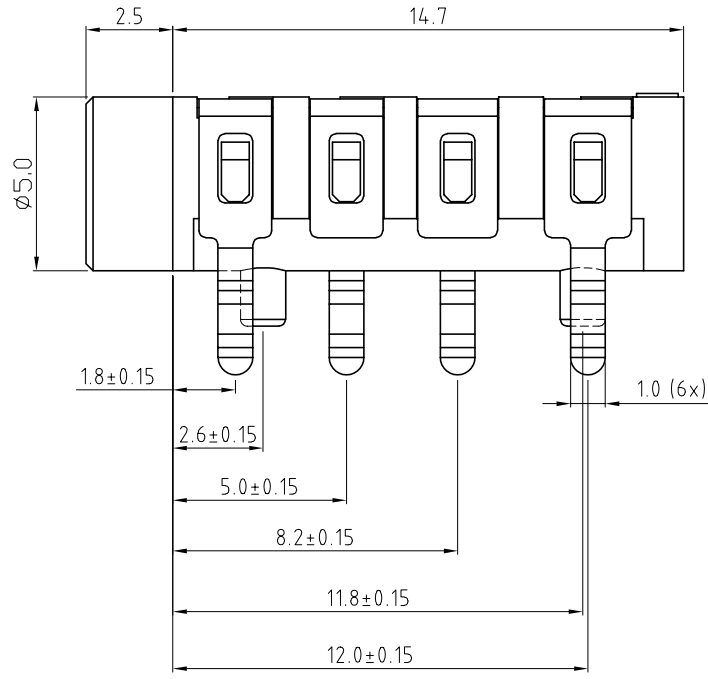
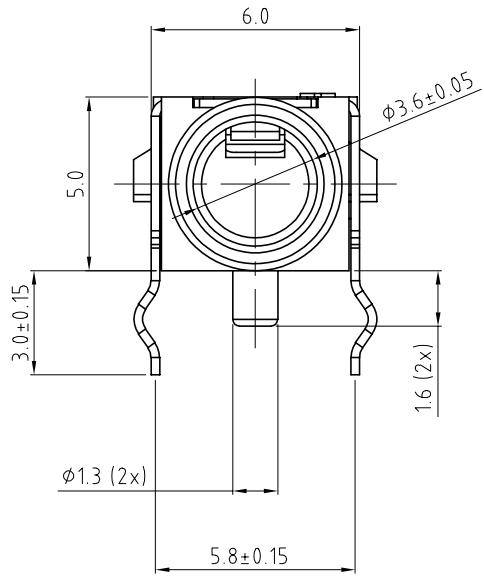
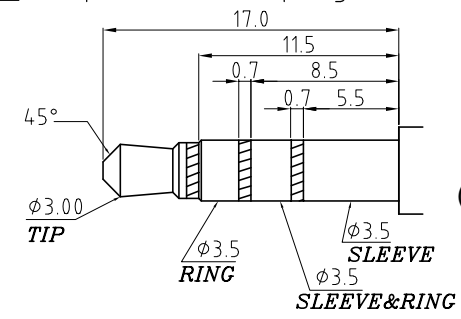


ISS.	AMEND	DATE
1	ISSUED	27/09/11
2	UPDATED	25/10/21



**P.C.B LAYOUT
TOP (COMPONENT) VIEW**

Note Requires 17mm plug see FC68122C



**PLUG
(SCALE 1:2)**

DESCRIPTION	MATERIAL	FINISH
HOUSING	PBT	BLACK
TIP CONTACT	PHOSPHOR BRONZE	SILVER PLATE
RING CONTACT	PHOSPHOR BRONZE	SILVER PLATE
SLEEVE RING CONTACT	PHOSPHOR BRONZE	SILVER PLATE
SLEEVE CONTACT	PHOSPHOR BRONZE	SILVER PLATE

RoHS
COMPLIANT

TOLERANCE
 NO DEC. PLACE ± 0.50
 1 DEC. PLACE ± 0.30
 2 DEC. PLACE ± 0.15
 HOLE Ø ± 0.10
 ANGLES ± 3°
 UNLESS OTHERWISE STATED

Cliff Electronic Components Ltd.
 76 Holmehorpe Avenue, Holmehorpe Industrial Estate,
 Redhill, Surrey, RH1 2PF, England, UK
 Tel: 01737-771375 Fax: 01737-766012 Website: www.cliffuk.co.uk

THE CONTENTS OF THIS DOCUMENT MUST NOT BE COPIED OR DISCLOSED TO A 3rd PARTY WITHOUT WRITTEN PERMISSION OF CLIFF UK. © 2011

DIMENSIONS IN MILLIMETERS UNLESS OTHERWISE STATED. WORK TO DIMENSIONS. REMOVE ALL BURRS. IF IN DOUBT ASK.

MATERIAL: SEE TABLE
 FINISH: SEE TABLE
 DRAWN: T.J.O.

3rd ANGLE PROJECTION:

TITLE: 3.5mm PHONE JACK - 4 POLE (17mm PLUG)

DRWG. No. **FC68128**

APPROVED: D.P.J.

DO NOT SCALE

FORM: A4DRWGH

Cliff Electronic Components Ltd.

76 Holmethorpe Avenue, Holmethorpe Industrial Estate,
Redhill, Surrey, RH1 2PF, England, UK
Tel: 01737-771375 Fax: 01737-766012 Website: www.cliffuk.co.uk

SPECIFICATIONS FOR PART NUMBER: FC68128

A) SCOPE

This specification covers " 3.5Ø PHONE JACK "

B) CHARACTERISTICS

Standard atmospheric specified, measurements shall be made at temperature , humidity and air pressure within the following limit :

Ambient temperature	:	5 °C	to	35 °C
Relative humidity	:	45 %	to	85 %
Air pressure	:	85 Kpa	to	106 Kpa

Operating temperature range	:	-20 °C	to	60 °C
Storage temperature range	:	-25 °C	to	70 °C

C) ELECTRICAL CHARACTERISTICS

ITEM	TEST CONDITIONS	SPECIFICATION
(C1)Rated Voltage Rated Current		DC 16V 20mA~0.3A
(C2)Insulation Resistance	A voltage of 500V DC shall be applied to the terminals. After which measurement shall be made. DC 500V	100M Ω or more ≥ 100M Ω

ITEM	TEST CONDITIONS	SPECIFICATION
(C3)Contact Resistance	<p>Measurement shall be made at 1 K Hz with 100 mA or less (With the test plug as show in item G)</p> <p><1>Initial before any testing</p> <p>a、Pin to contact or (T-TS, R-RS) (N.C.).</p> <p>b、Plug shield to socket or (T,R,S,) (N.O.).</p> <p><2>After life test with mating plug</p> <p>a、Pin to contact or (T-TS, R-RS) (N.C.).</p> <p>b、Plug shield to socket or (T,R,S,) (N.O.).</p>	<p>Initial :</p> <p>a、30mΩ or Less $\leq 30m\Omega$</p> <p>b、50mΩ or Less $\leq 50m\Omega$</p> <p>After life :</p> <p>a、60mΩ or Less $\leq 60m\Omega$</p> <p>b、100mΩ or Less $\leq 100m\Omega$</p>
(C4)Dielectric Strength	<p>Withstand 0.5 mA (Trip current) 500V AC(50 or 60 Hz) between any open terminal for 1 minute.</p> <p>(Open terminal: Between each terminal which should not make contact , before plug insert to socket R-T,R-S, after plug insert to socket R-RS, T-TS,)</p>	Without distinct Damage

--	--	--

D) . MECHANICAL CHARACTERISTICS

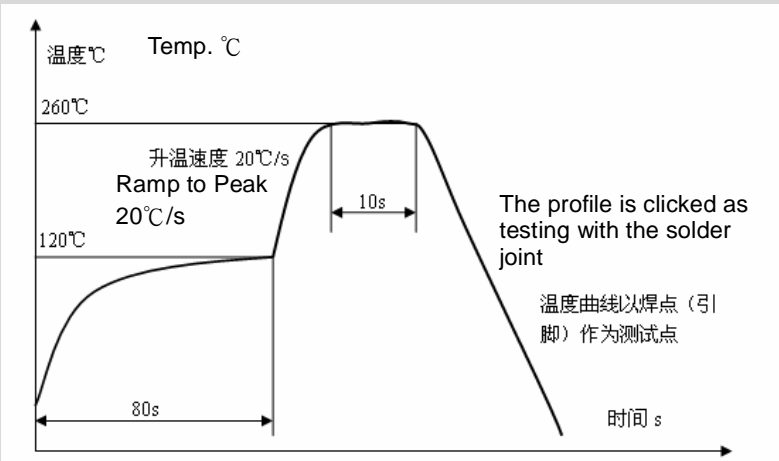
ITEM	TEST CONDITIONS	SPECIFICATION
(D1) Insertion force and Withdrawal force	Initial (With the test plug as show in item G)	Insertion force 0.3kgf ~ 3kgf
		Withdrawal force 0.3kgf ~ 3kgf
	After life test (With the test plug as show in item G)	Insertion force 0.2kgf ~ 2kgf
		Withdrawal force 0.2kgf ~ 2kgf
(D2) Terminal strength	Terminals must withstand a 500g minimum pull for 10 seconds before movement or break from housing occurs , but deformation of terminal is authorized .	

E) . ENDURANCE CHARACTERISTICS

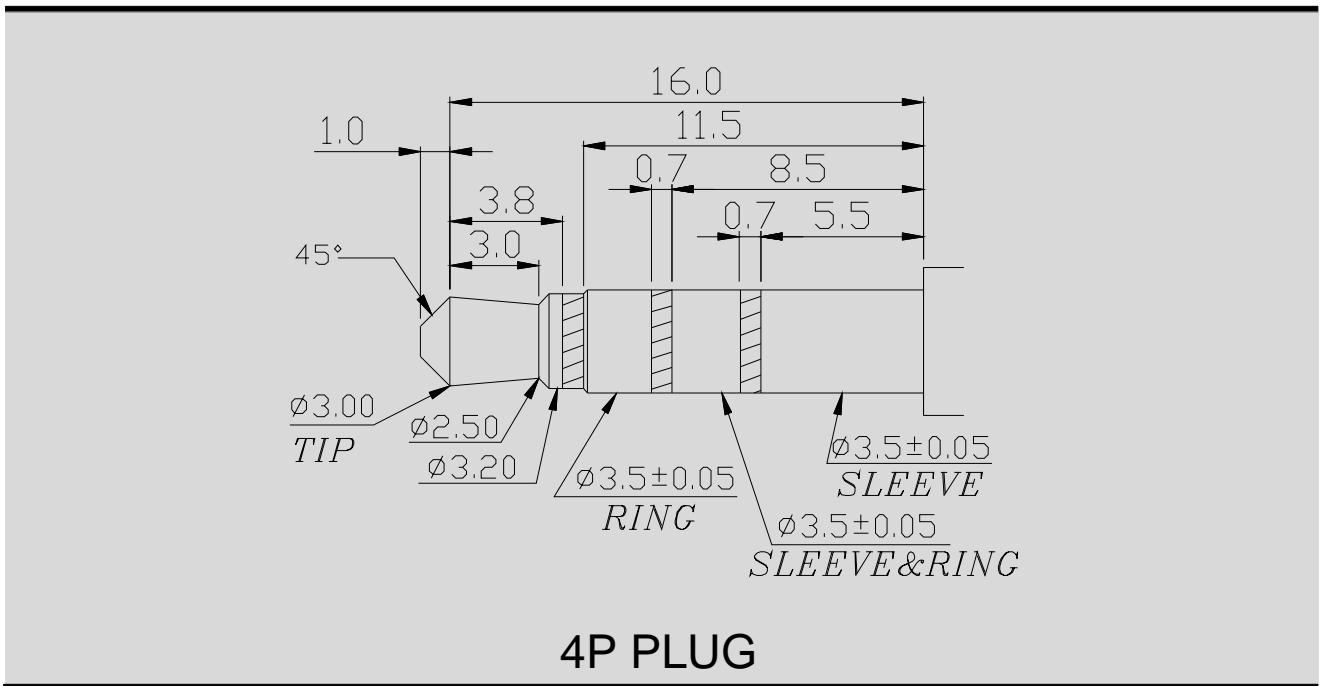
ITEM	TEST CONDITIONS
(E1) Life test	The life test shall consist of 5,000 cycles of insertion and withdrawal with test plug(Show in item G), at a rate of 20 to 30 cycles per minute under no load .

(E2)Soldering test	The terminal of JACK tested shall be dipped into soldering flux or equivalent for 5 ~ 10 seconds and then immersed into molten solder Sn at $260 \pm 5^{\circ}\text{C}$ for 3 ± 0.5 seconds , the coverage should more than 95% .
(E3)Soldering heat	The terminal for a printed circuit board . Temperature of solder : $260 \pm 5^{\circ}\text{C}$ Dip time : 5 ± 1 seconds .
(E4) Hand Soldering Temperature	Temperature of solder : $350 \pm 10^{\circ}\text{C}$ Dip time : 3 ± 0.5 seconds .

F) . Temperature graph

ITEM	TEST CONDITIONS
The temperature peak without lead.	 <p>Pre-heating temperature is 25 ~ 120°C ,for a duration about 80 seconds.</p> <p>The peak temperature is 260°C , the duration for 10 seconds.</p>

G) . MATED PLUG



NOTE THIS SOCKET REQUIRES LONGER 4 POLE PLUG.
CLIFF PLUG FC68124 IS NOT SUITABLE.

USE FC68122C OVERMOULDED PLUG

	A	C	M	
	P	H	A	
	V	K	K	
25/10/2021	D	D	E	Roy
		Jacky	Dragon	