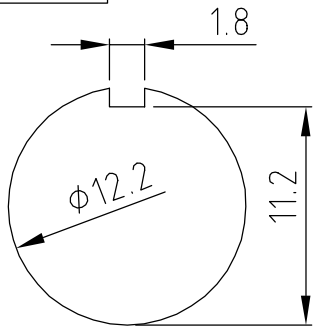
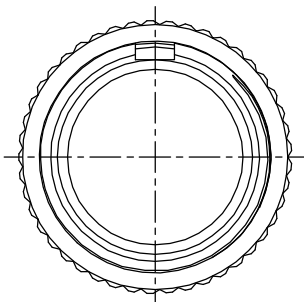


ISS.	AMEND	DATE
1	1st DRAWN	23/10/12
2	UPDATED	14/06/17

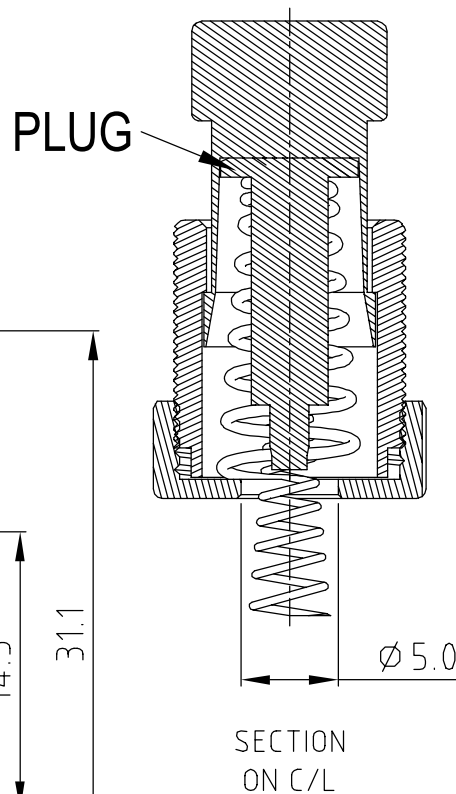
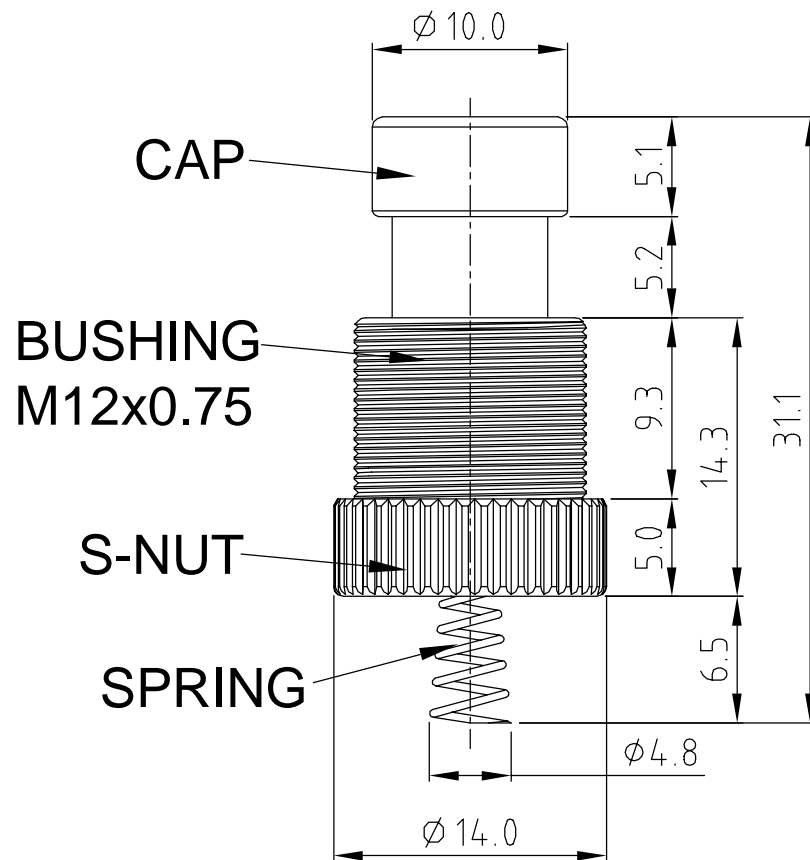


PANEL CUTOUT
THICKNESS 2.0mm MAX

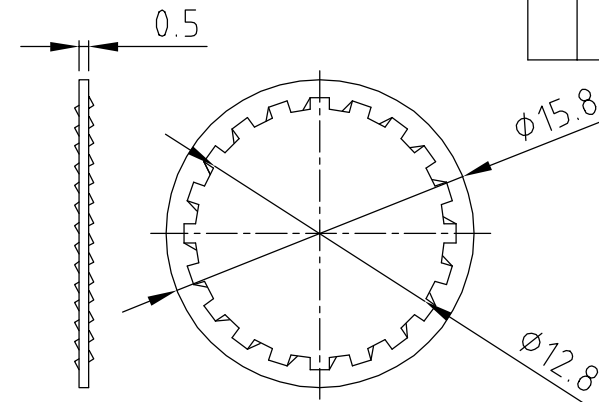


SPECIFICATIONS

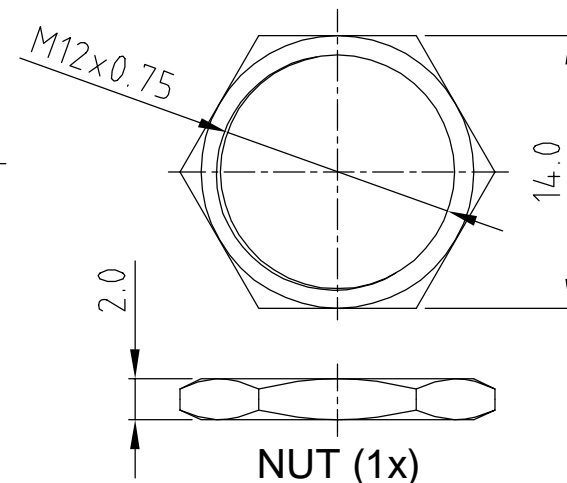
OPERATING FORCE: 650 ±250 gf
LIFE CYCLES: 20,000x



SECTION ON C/L



WASHER (1x)



NUT (1x)

NUT + WASHER SUPPLIED UNASSEMBLED

RoHS
COMPLIANT

TOLERANCE
NO DEC. PLACE ± 0.50
1 DEC. PLACE ± 0.30
2 DEC. PLACE ± 0.15
HOLE Ø ± 0.10
ANGLES ± 2°
UNLESS OTHERWISE STATED

DO NOT SCALE

Cliff Electronic Components Ltd.
76 Holmethorpe Avenue, Holmethorpe Industrial Estate,
Redhill, Surrey, RH1 2PF, England, UK
Tel: 01737-771375 Fax: 01737-766012 Website: www.cliffuk.co.uk

DIMENSIONS IN MILLIMETERS UNLESS OTHERWISE STATED. WORK TO DIMENSIONS. REMOVE ALL BURRS. IF IN DOUBT ASK.

3rd ANGLE PROJECTION:

MATERIAL: BRASS / STEEL / PIANO WIRE

TITLE: ACTUATOR SWITCH (NUT + WASHER UNASSEM)

FINISH: CLEAN - NICKEL PLATED

THE CONTENTS OF THIS DOCUMENT MUST NOT BE COPIED OR DISCLOSED TO A 3rd PARTY WITHOUT WRITTEN PERMISSION OF CLIFF UK. © 2012

DRAWN: T.J.O.

APPROVED: D.P.J.

DRWG. No. **FC7125**

FORM: A4DRWGH