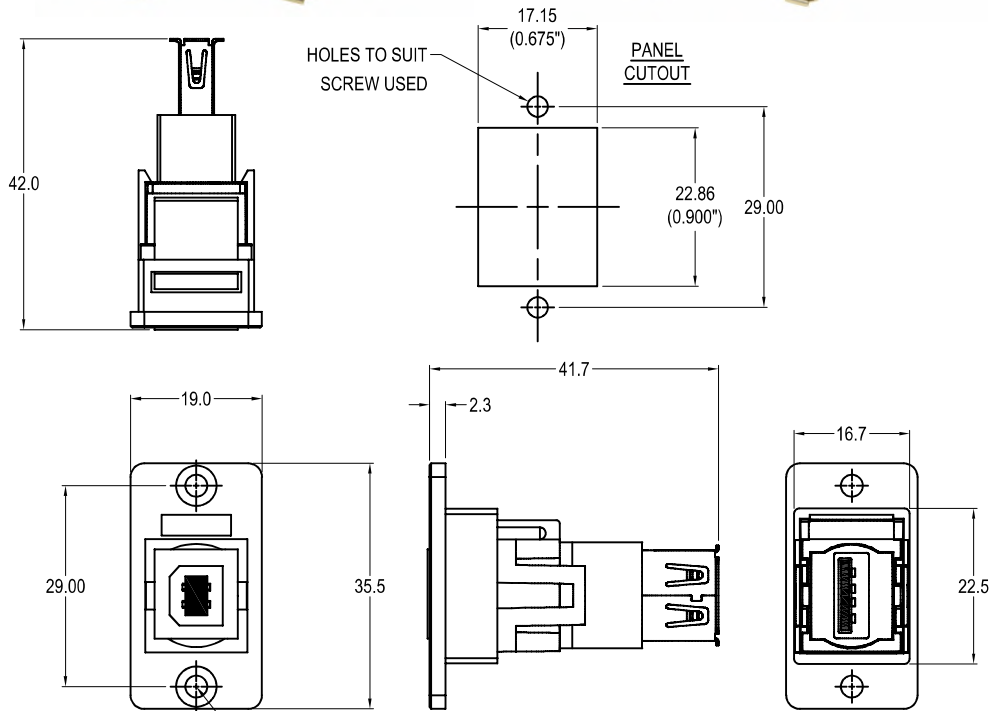


# CLIFF

## SLIM USB2.0 B-A FRONT MOUNTING METAL FRAME FEEDTHROUGH



2x HOLE VARIANTS  
 $\varnothing 3.2\text{mm}$  CSK  $90^\circ \times \varnothing 5.85$   
 PLAIN  $\varnothing 3.2$  HOLES

### VARIANTS

Part No.

- CP30607NM** SLIM FM USB2.0 B-A Nickel frame, CSK holes
- CP30607NMB** SLIM FM USB2.0 B-A Black metal frame, CSK holes
- CP30607NMX1** SLIM FM USB2.0 B-A Nickel frame,  $\varnothing 3.2$  PLAIN holes
- CP30607NMBX1** SLIM FM USB2.0 B-A Black metal frame,  $\varnothing 3.2$  PLAIN holes

### Feedthrough Features

- Fits standard rectangular cutout.
- Various hole mounting options.
- No soldering or punch termination. Use standard cable for each connector style.
- Low rear profile.

### General:

Please note: Functionality is affected by cable quality, length and cable wiring configuration.

### Material:

1. Insert: ABS
2. Frame: Diecast, Nickel or Black plated
3. Shell: Nickel plated steel
4. Contacts: Gold Plated

### Notes:

1. Voltage rating: 30V AC
2. Current rating: 1.5 A max
3. Contact resistance: 50m $\Omega$  max
4. Insulation resistance: 20M $\Omega$  min
5. Dielectric withstanding voltage: 500V AC
6. Operating Temperature: -20°C to 50°C