



The **CLIFF** Cliffcon® 8 pole connectors are intended for any application where a reliable locking touchproof connector system is required. Incorporating a tough, durable construction with touchproof contacts to EN60065, IEC348 and EN61010-1, easy locking / unlocking mechanism and integral cable clamp, Cliffcon® is the ideal connector for many different applications such as lighting, chargers and instrumentation. Receptacles are available for panel and vertical PCB mounting.

Significant features include:

- Safety leading ground pin - makes first, breaks last to prevent damage from arcing if disconnected under load.
- Faston quick disconnect on panel mounting socket.
- Choice of flat head screw / washer or solder tag connections in cable plug.
- Integral cable clamp for 6mm to 15mm diameter cable.
- Panel mounting connector is airtight.
- Plug and socket mated meets IP55 minimum.

Part Nos:

FCR2072 - CLIFFCON 8 POLE PLUG 8PC/P

FCR2074 - CLIFFCON 8 POLE SOCKET 8PC/S

CL2070 - CLIFFCON 8 POLE COVER ASSEMBLY

Cliff Electronic Components, Ltd.

76 Holmethorpe Avenue, Holmethorpe Ind. Est.

Redhill, Surrey RH1 2PF. England

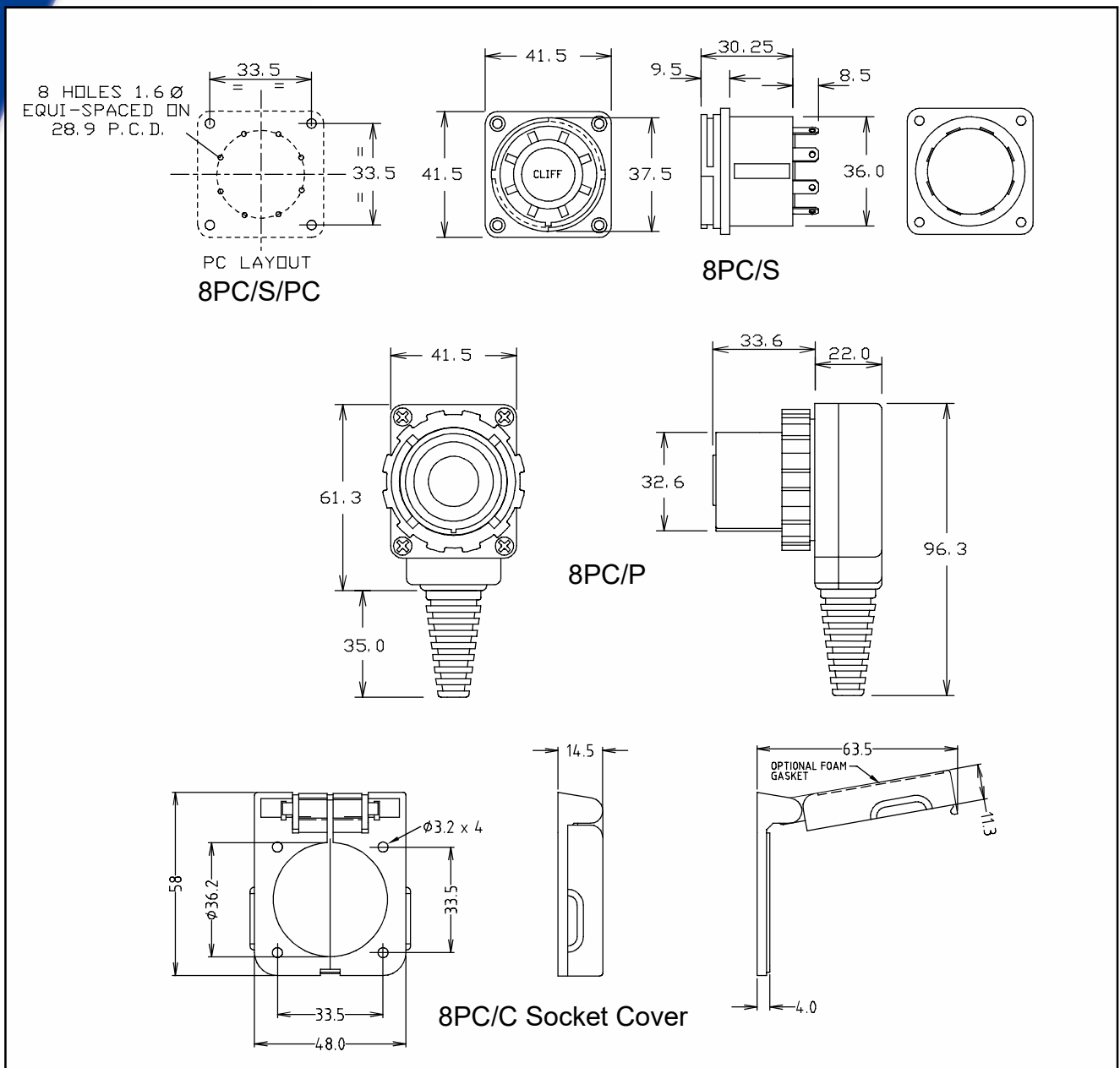
Tel: +44 (0) 1737 771375

Fax: +44 (0) 1737 766012

Email: sales@cliffuk.co.uk

www.cliffuk.co.uk





Specification

Rated Current:	8 pin 10A. RMS @ 80°C, 15A. RMS @ 20°C (same current on all 8 pins flowing through both plug and socket).
Rated Voltage:	250VAC max.
Contact Resistance:	<8mΩ
Capacitance between Terminals:	<3.5pf.
Insulation Resistance:	>20mΩ @ 1000V
Inrush Current:	>30A. / 20mS.
Operating Voltage:	-20°C to +80°C
Recommended Wiring:	Pin 1 designated for Earth.
Contacts:	Tin plated
Max. Wire Size:	6mm ² / 10AWG (solid), 4mm ² / 12AWG (stranded)