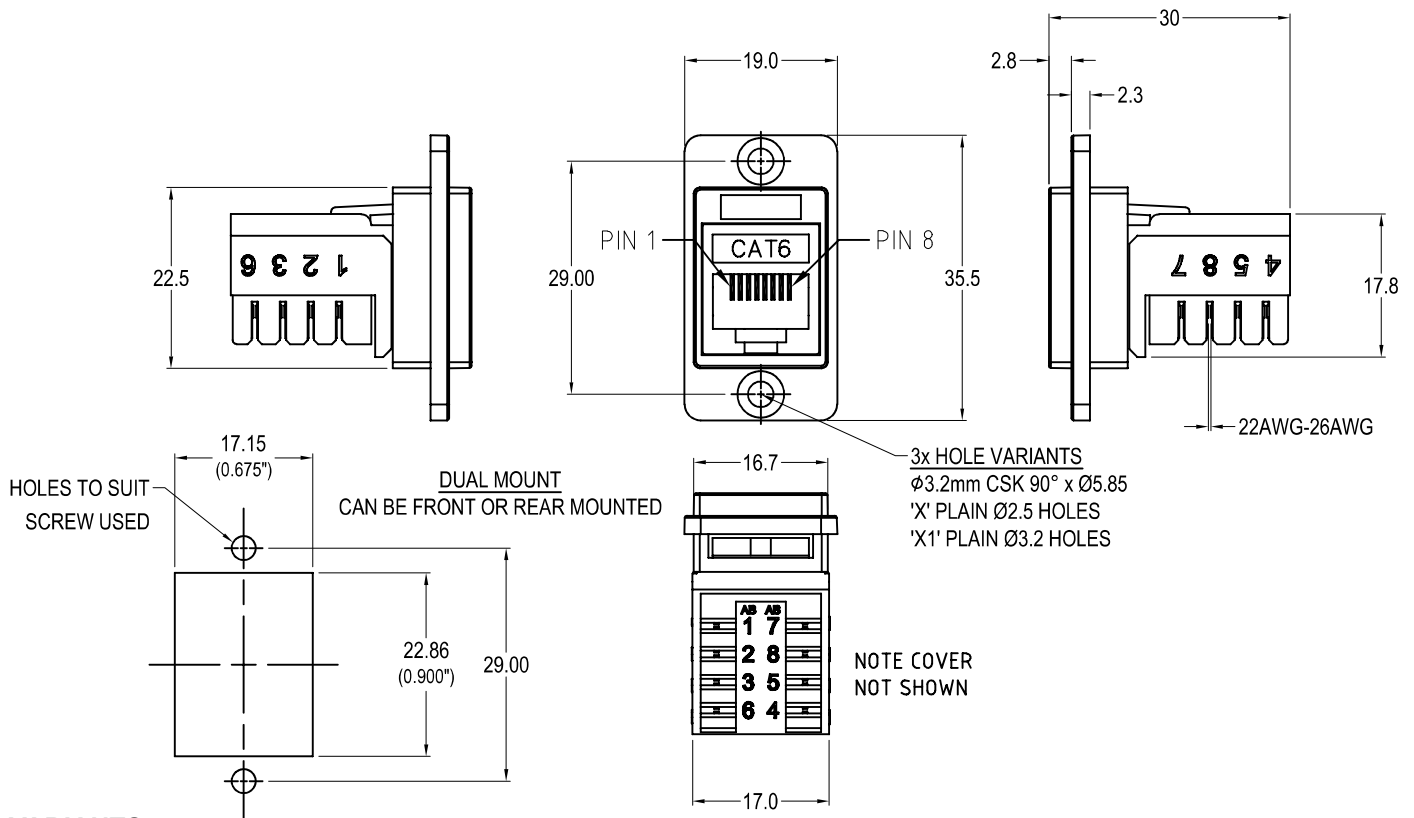


CLIFF

CAT6 IDC FEEDTHROUGH CONNECTOR



VARIANTS

Part No.

- CP30727** DUALSLIM Cat6 IDC Black plastic frame, CSK holes
- CP30727X** DUALSLIM Cat6 IDC Black plastic frame, ϕ 2.5 PLAIN holes
- CP30727X1** DUALSLIM Cat6 IDC Black plastic frame, ϕ 3.2 PLAIN holes

Feedthrough Features

- Fits standard rectangular cutout.
- Front or rear mounting through the panel.
- Various hole mounting options.
- Low rear profile.

General:

Please note: Functionality is affected by cable quality, length and cable wiring configuration.

Material:

1. RJ45 / IDC / Cover : PC
2. RJ45: Phosphor Bronze, gold plated
3. IDC: Phosphor Bronze, nickel plated
4. PCB: FR4
5. Plastic Frame: Polyamide UL94 V-2

Performance:

1. T568A + T568B wiring.