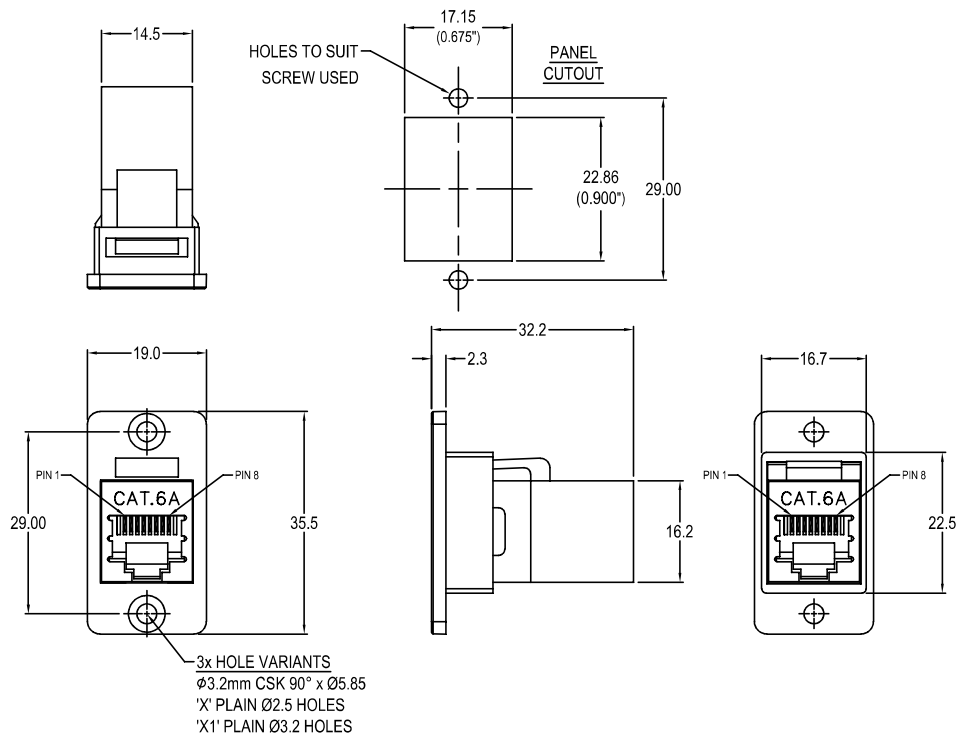
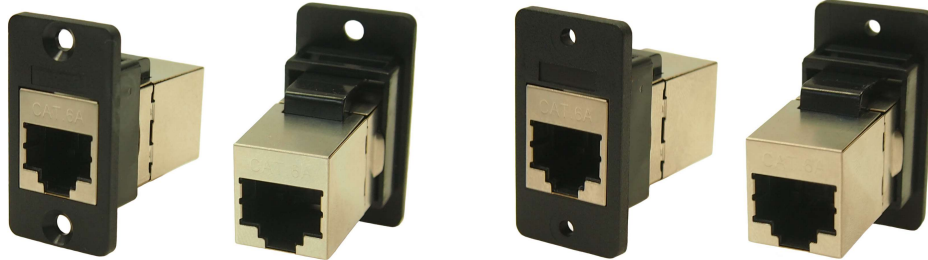


CLIFF

SLIM CAT.6A SHIELDED RJ45 FRONT MOUNTING FEEDTHROUGH CONNECTOR



Part No.

- CP30625S** SLIM FM Cat.6A Shielded RJ45 Black plastic frame, CSK holes
CP30625SX SLIM FM Cat.6A Shielded RJ45 Black plastic frame, Ø2.5 PLAIN holes
CP30625SX1 SLIM FM Cat.6A Shielded RJ45 Black plastic frame, Ø3.2 PLAIN holes

Feedthrough Features

- Fits standard rectangular cutout.
- Various hole mounting options.
- No soldering or punch termination. Use standard cable for each connector style.
- Low rear profile.

General:

Please note: Functionality is affected by cable quality, length and cable wiring configuration.

Material:

- 1.RJ45 In-Line Coupler:
PC/ABS, UL 94V-0, Black colour
- 2.RJ45 In-Line Coupler Contact:
Phosphor Bronze, 3-50 micro inches gold plating over nickel plate.
- 3.PCB: FR4, UL 94V-0
- 4.Plastic Frame: Polyamide UL94 V-2

Performance:

- 1.T568A & T568B wiring.
- 2.Meet ISO/IEC 11801 and EN50173
- 3.Meet ANSI/TIA/EIA 568B.2
- 4.Operating temperature: Min -10°C Max +70°C